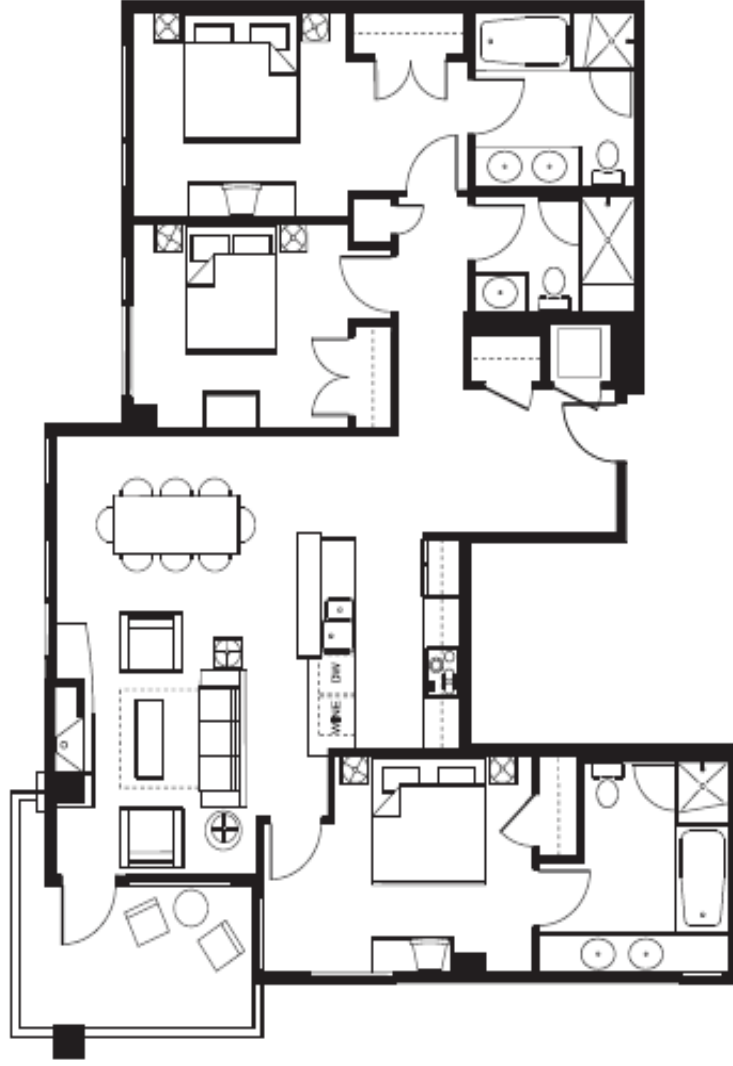


Hayden Lodge

200 LEVEL



3-Bedroom

Suite Type: 3A

Numbers: 206

Approx. area: 1484 sq. ft.

These are preliminary rates (upside only). The developer reserves the right to make changes to floorplans, project delays, specifications, and features. Final dimensions, square footages, and floorplans may vary.

Hayden Lodge

200 LEVEL



Approx. area: 1580 sq. ft.

Numbers: 202

Suite Type: 3B

3-Bedroom

This is preliminary site layout only. The developer reserves the right to make changes to floorplans, project design, specifications, and features. Final dimensions, square footage, and floorplans may vary.

Hayden Lodge

200 LEVEL



3-Bedroom

Suite Type: 3C

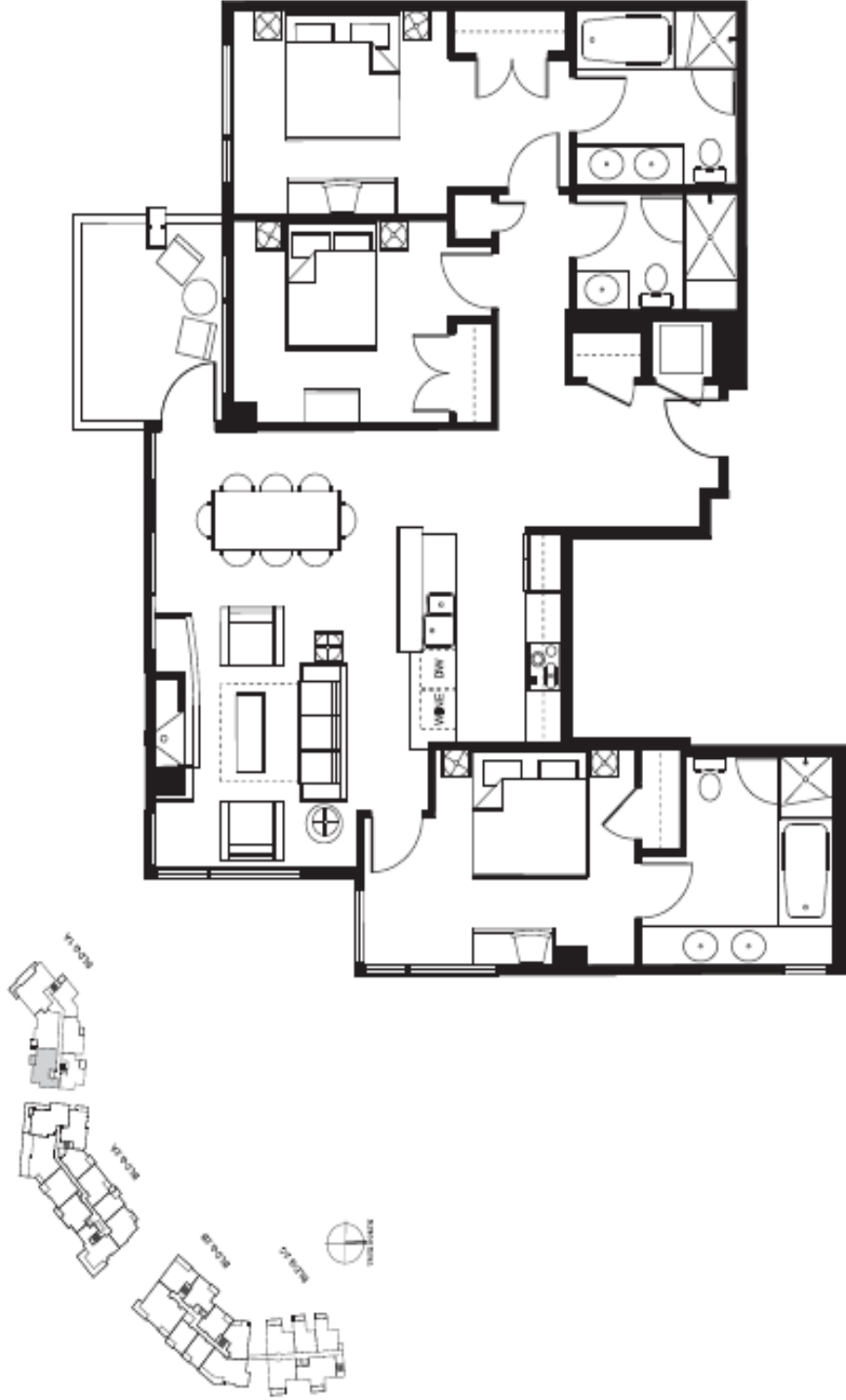
Numbers: 204

Approx. area: 1464 sq. ft.

These are preliminary site layouts only. The developer reserves the right to make changes to floorplans, project design, specifications, and features. Final dimensions, square footages, and floorplans may vary.

Hayden Lodge

300 LEVEL



3-Bedroom

Suite Type:3D

Numbers: 304

Approx. area: 1482 sq. ft.

This is preliminary site layout only. The developer reserves the right to make changes to floorplans, project design, specifications, and features. Final dimensions, square footage, and floorplans may vary.

Hayden Lodge

300 LEVEL



3-Bedroom

Suite Type:3E

Numbers:302

Approx. area: 1468 sq.ft.

Plans are preliminary and subject to change. The developer reserves the right to make changes to floorplans, project design, specifications, and features. Final dimensions, square footages, and floorplans may vary.