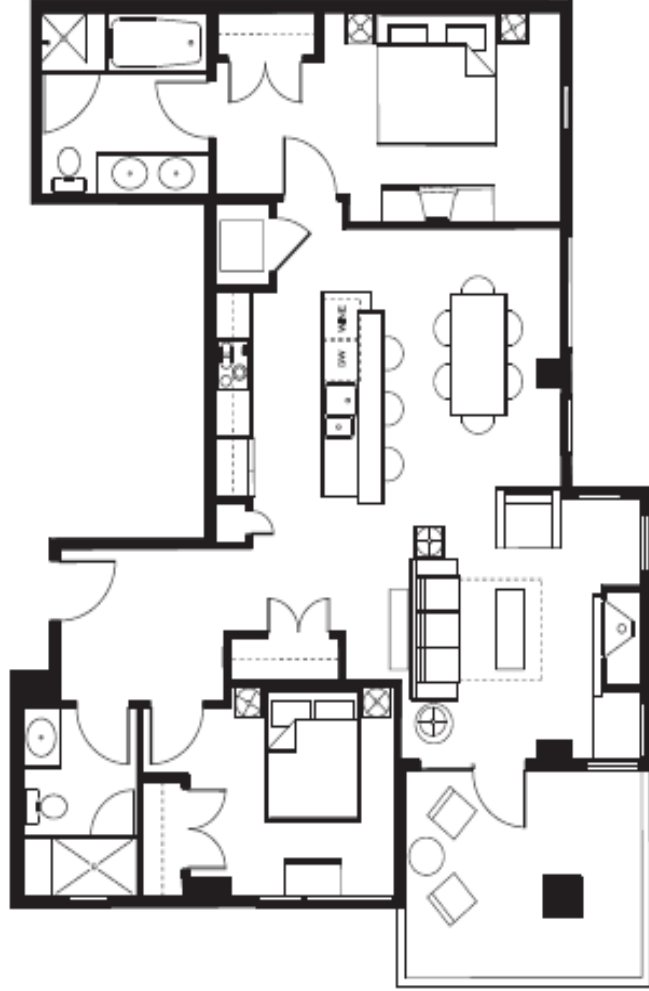


Hayden Lodge

200 LEVEL



2-Bedroom

Suite Type: 2A

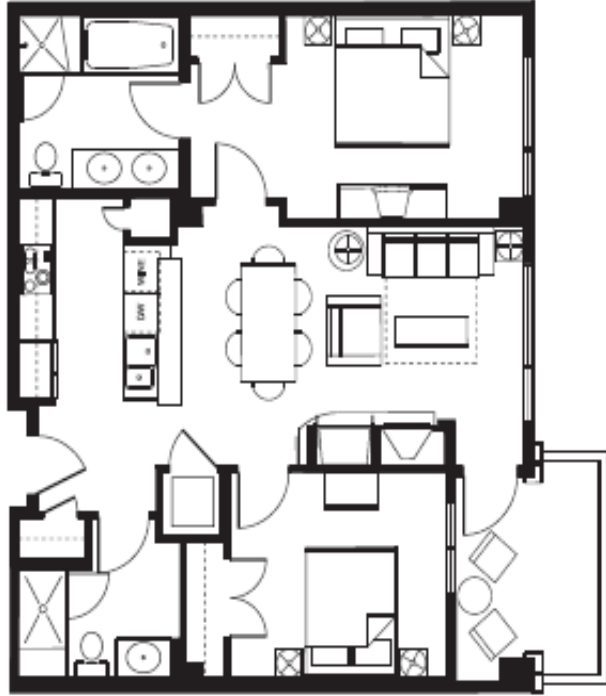
Numbers: 209

Approx. area: 1178 sq. ft.

These are preliminary site layouts only. The developer reserves the right to make changes to floorplans, project design, specifications, and fixtures. Final dimensions, square footage, and floorplans may vary.

Hayden Lodge

200 LEVEL



2-Bedroom

Suite Type: 2B

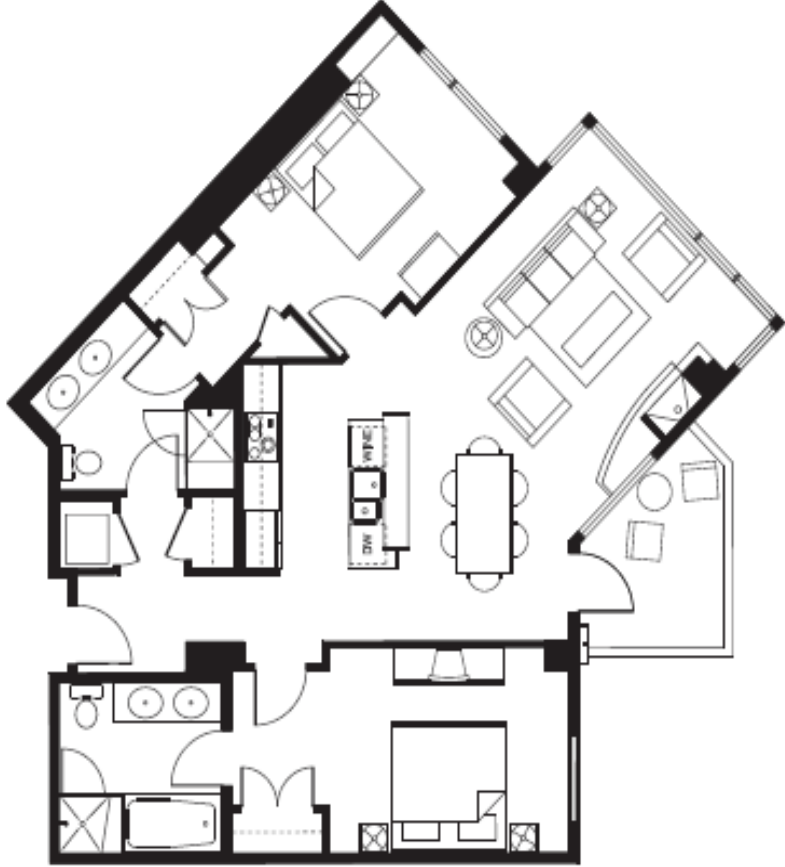
Numbers: 207

Approx. area: 952 sq. ft.

These are preliminary plans. Hayden Lodge is a registered trademark of Hayden Lodge. The developer reserves the right to make changes to floorplans, project design, specifications, and fixtures. Final dimensions, square footages, and floorplans may vary.

Hayden Lodge

200 LEVEL



2-Bedroom

Suite Type: 2C

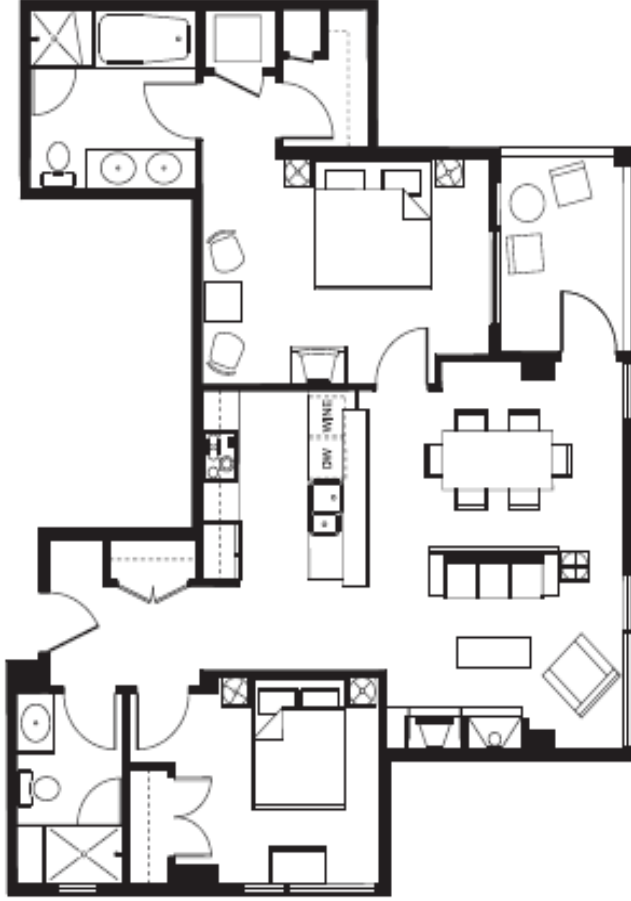
Numbers: 205

Approx. area: 1161 sq. ft.

These are preliminary site layouts only. The developer reserves the right to make changes to floorplans, project design, specifications, and features. Final dimensions, square footages, and floorplans may vary.

Hayden Lodge

300 LEVEL



2-Bedroom

Suite Type: 2E

Numbers: 307

Approx. area: 1101 sq. ft.

These are preliminary site layouts only. The developer reserves the right to make changes to floorplans, project design, specifications, and features. Final dimensions, square footages, and floorplans may vary.

Hayden Lodge

300 LEVEL



2-Bedroom & Den | Suite Type:2F | Numbers: 305 | Approx. area: 1204 sq. ft.

These are preliminary site layouts only. The developer reserves the right to make changes to floorplans, project design, specifications, and features. Final dimensions, square footages, and floorplans may vary.